

# Street Addiction Consult Team

Commission on Alcohol & Other Drugs

Wednesday, July 8<sup>th</sup> 2026

**SAPC** | Substance Abuse  
Prevention and Control



José Luis González, MD  
Associate Medical Director, Street Addiction Consultation Team  
Substance Abuse Prevention and Control  
Department of Public Health, Los Angeles



STATEMENT OF PROCEEDINGS FOR THE  
REGULAR MEETING OF THE BOARD OF SUPERVISORS  
OF THE COUNTY OF LOS ANGELES HELD IN ROOM 381B  
OF THE KENNETH HAHN HALL OF ADMINISTRATION  
500 WEST TEMPLE STREET, LOS ANGELES, CALIFORNIA 90012

Wednesday, November 6, 2024

9:30 AM

# Board of Supervisor's Motion

10. Piloting Department of Public Health Directly Operated Substance Use Disorder Services

- November 2024: launch “**Directly Operated Field Team**”
- *...to expand the SUD capabilities of the County's current field-based substance use disorder (SUD) services...*
- Developing workflows
- Coordinating physical, mental, and addiction services
- Expanding SUD capabilities including medications for addiction treatment

# Street Addiction Consultation Team

- To improve *access to* and *quality of* substance use services
- For **patients experiencing homelessness**
- Delivered By Field Teams such as:
  - Outreach Teams working w/ PEH (harm reduction, housing, social services)
  - Community clinics / FQHCs with field teams
  - Street Medicine Organizations
  - DMH and DPH teams (justice-involved, TAY, IHOP, HOME)
- By prescribing **meds for addiction & coordination of services**
- Via a **consultation model**



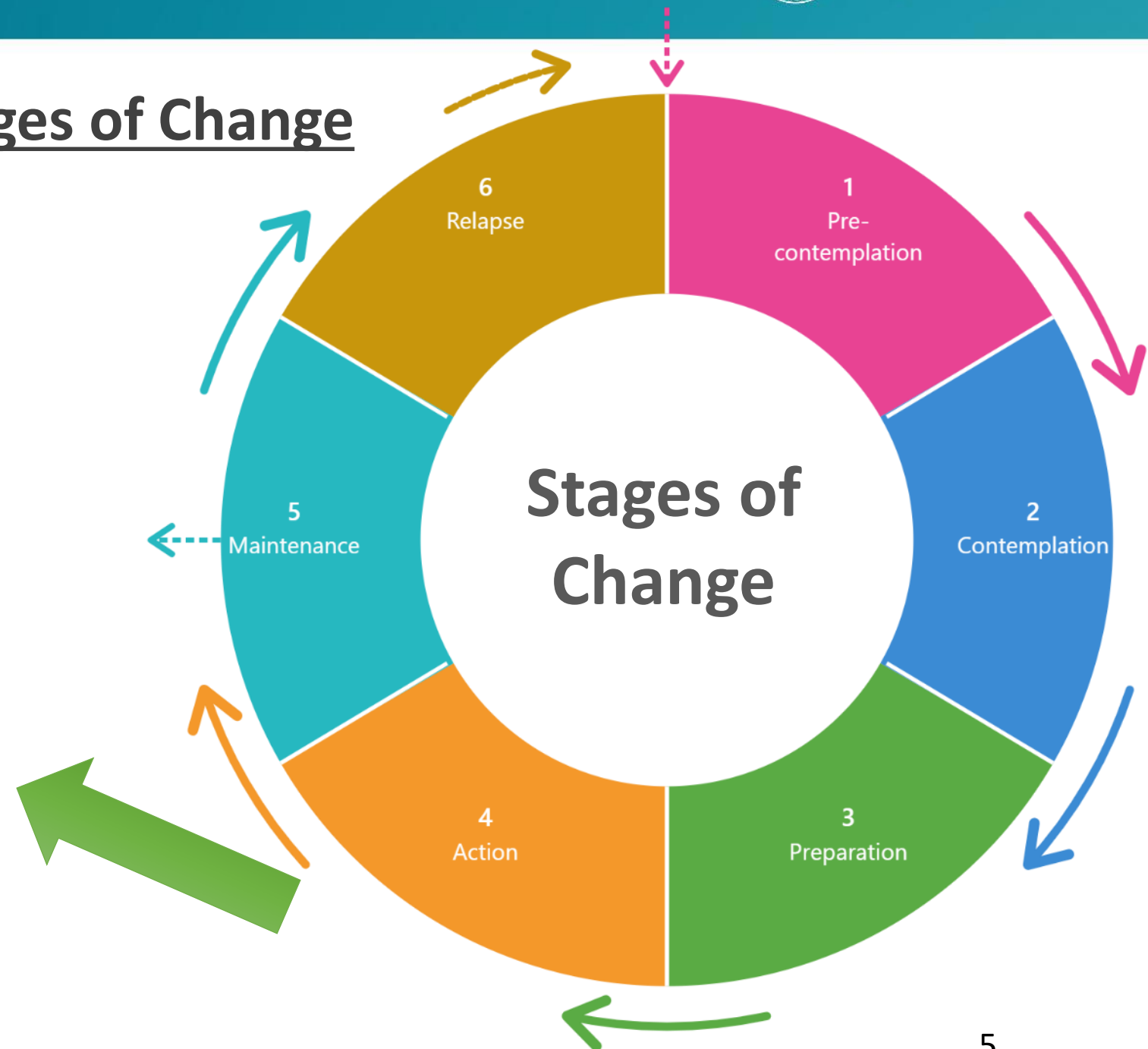
## Street Medicine Model of Care

- Proactive, public-health oriented approach
- Based on rapport building
- Meeting patients where they are
- Low-threshold care
- Harm reduction
- Practical problem solving
- Frontier of medicine - Best practices don't yet exist

## Timely Intervention Using the Stages of Change

### Action

- Medication
- Inpatient rehab
- Sober living
- Hep C / HIV treatment
  - Therapy
- Housing Services
- Primary Care Services

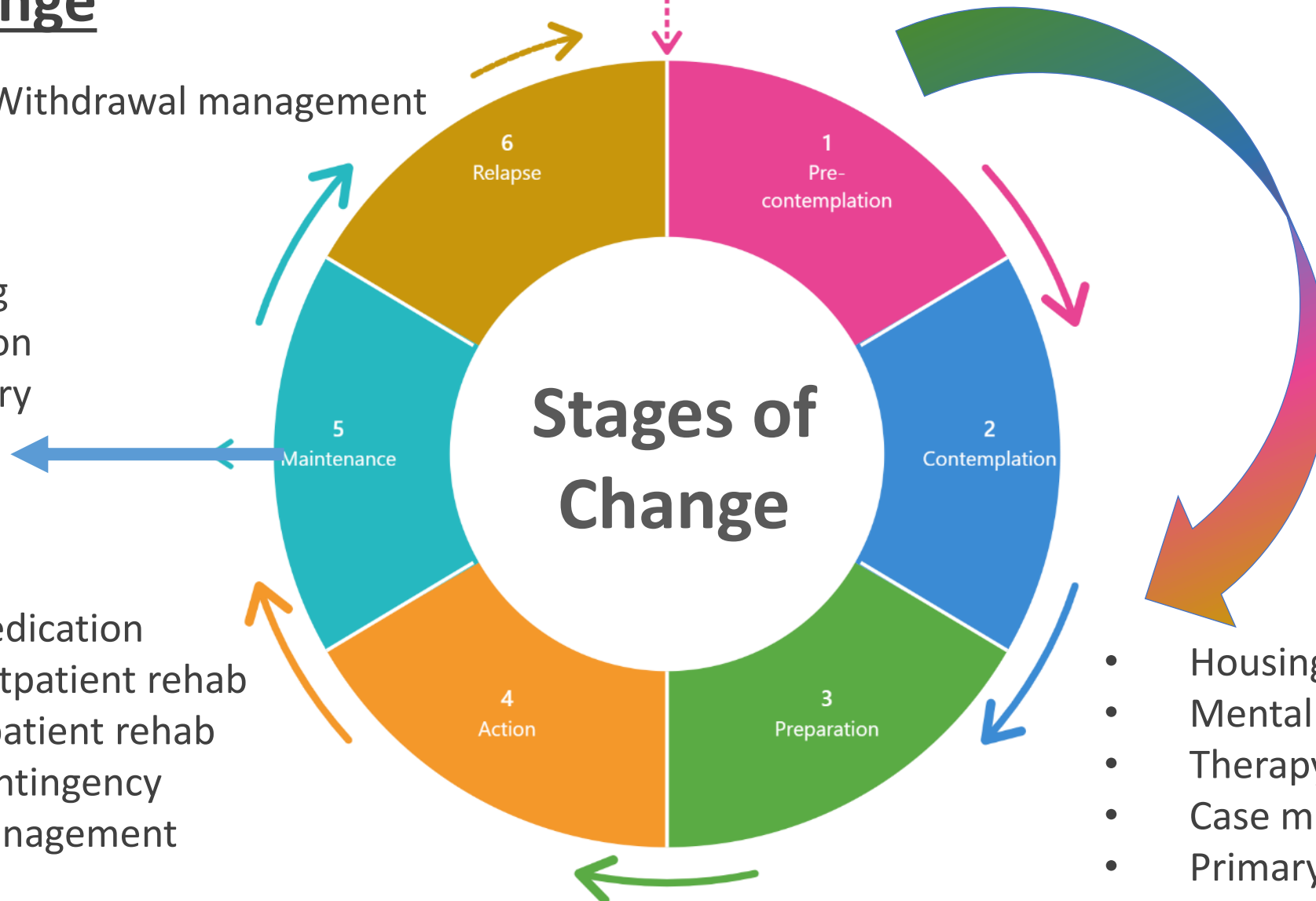


# Timely Intervention Using the Stages of Change

- Prevention
- Withdrawal management

- Recovery Housing
- Relapse prevention
- Workforce re-entry

- Medication
- Outpatient rehab
- Inpatient rehab
- Contingency management



- Harm reduction
- OD prevention
- HIV & Hep C tx

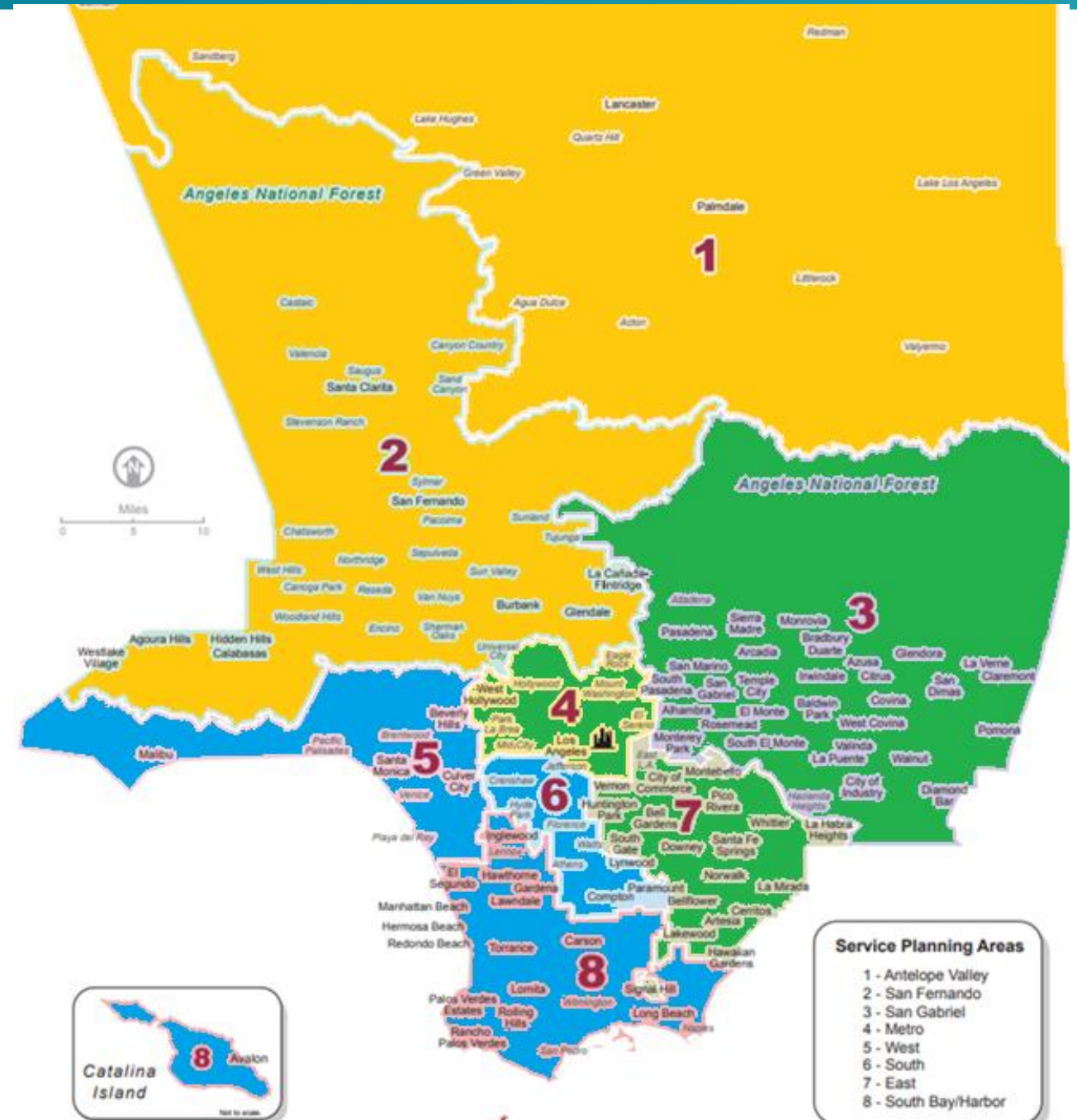
- Housing services
- Mental Illness Tx
- Therapy
- Case management
- Primary care services

## Who's on our team?

- Clinical Social Worker
- Substance Use Counselor
- Addiction Physician

## Geography

1. Valleys
2. Metro East
3. SouthWest



# Street Addiction Consultation Team

- **Technical Assistance**

- Protocol and Policy Creation
- Field Based MAT services
- GPS tracker implementation
- Low-barrier scheduling
- Group visits

- **Consultation**

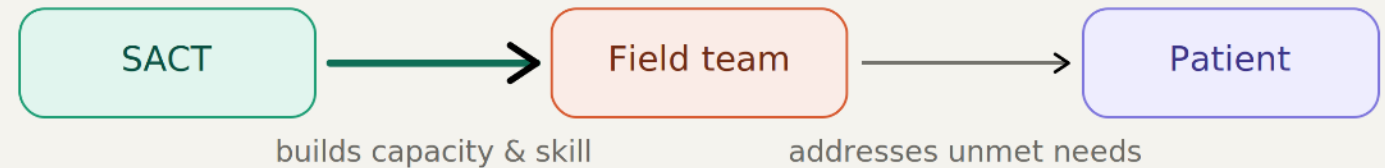
- 1:1 Physician Consultation & Meds
- 1:1 SUD Counselor Navigation
- 1:1 Social Work Consultation
- Virtual Addiction Rounds

- **Navigation / Care Coordination**

- Contingency Management Programs
- Linkage to Medical & Mental Health
- RecoverLA, SASH, SBAT Training
- Access to IP/OP treatment

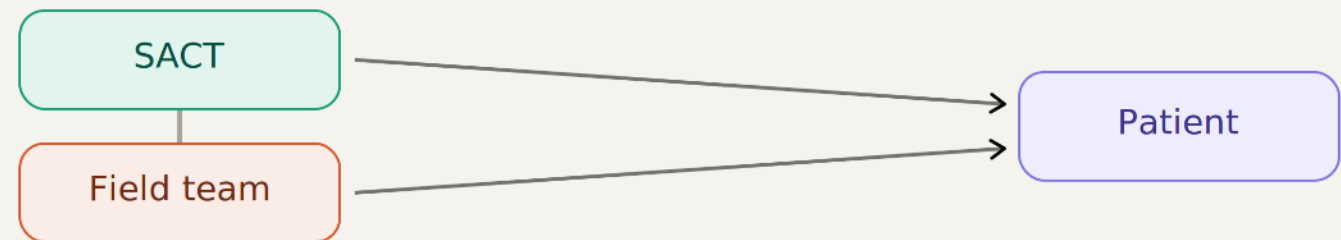
## **Technical assistance & training**

We strengthen what field teams can do



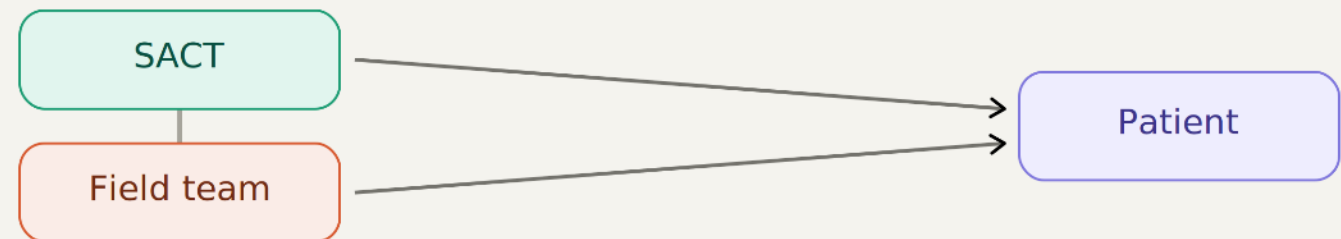
## **Consultation**

SACT works with your team to provide addiction services



## **Care navigation**

We help teach you how to navigate your patients into care



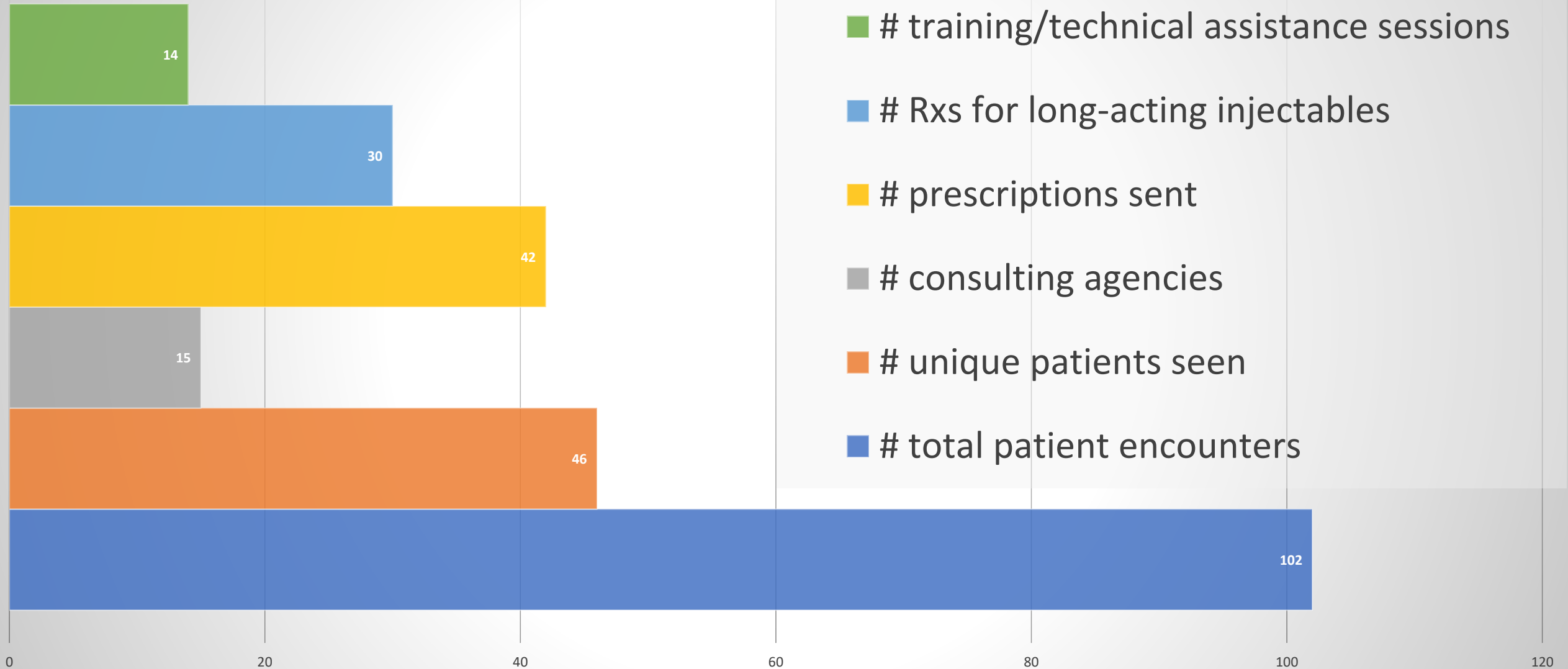
# Patient Consults Cases & Checklist for New Consults

1. IHOP team consult for couple at interim site in South Central
2. Community Reintegration Team Consult in Hollywood
3. HOME team consult for patient in Long Beach

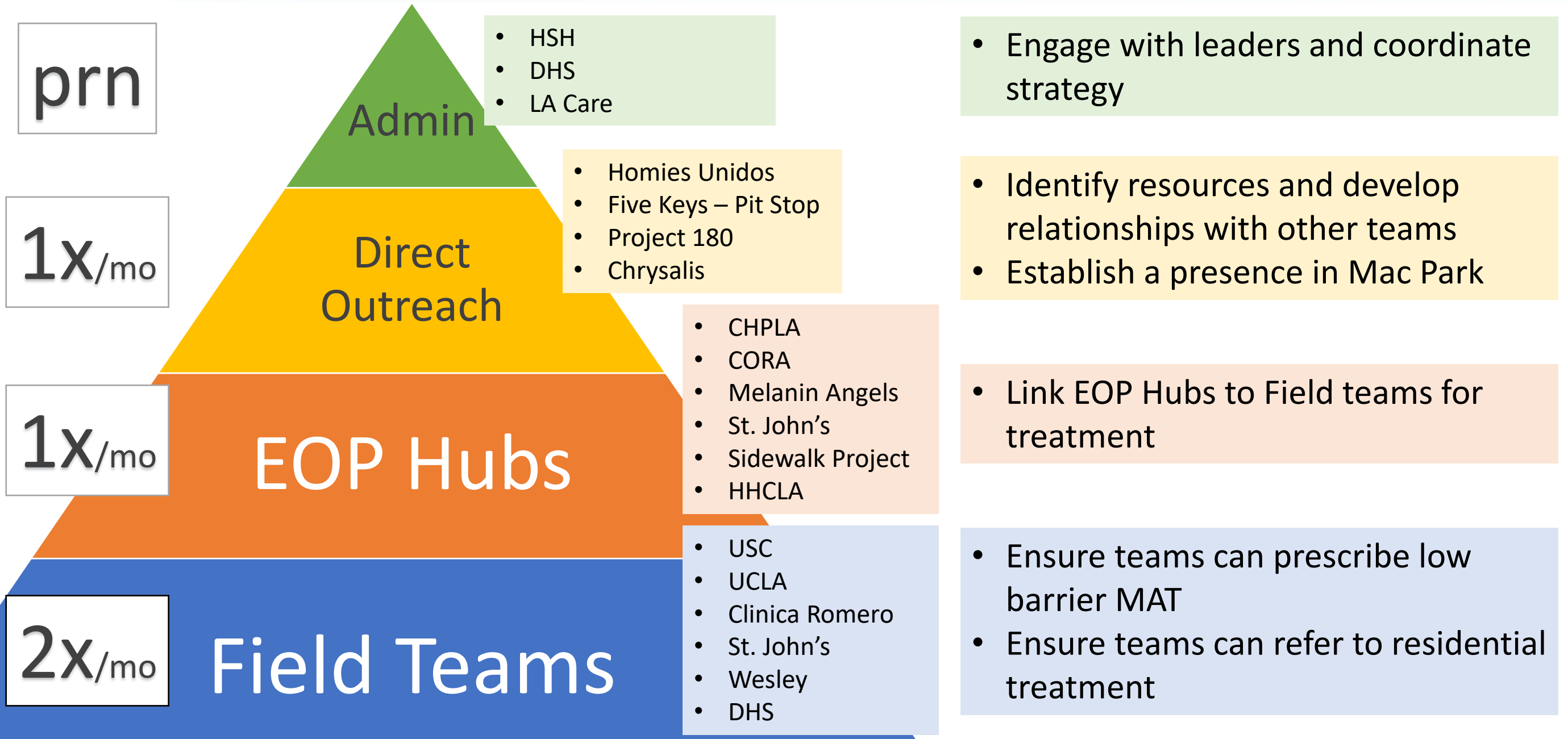
- ✓ Our role as consultants
- ✓ Identify Prescriber
- ✓ Identify Case manager
- ✓ Team goals of care



## Street Addiction Consult Team Stats



# MacArthur Park SACT Engagement Strategy



## Future Directions

- Patient Trackers
- Augmenting LA MAT Line for an in-field presence
- Addiction Rounds for LA providers
- Hospital inpatient collaboration & discharge planning
- Advocacy

# How to consult us

- Contact us at ([SAPC-SACT@ph.lacounty.gov](mailto:SAPC-SACT@ph.lacounty.gov))
- 213-210-3572
- Contact any of our team-members directly

## SAPC Street Addiction Consultation Team

---

### Who We Are

DPH-SAPC's **Street Addiction Consultation Team** is a multidisciplinary group dedicated to supporting all existing field-based service providers—including street outreach, medical, and behavioral health teams—in delivering high-quality substance use and harm reduction services to people experiencing homelessness (PEH) in Los Angeles County.

We operate three teams, each team consisting of a **substance use counselor**, a **physician**, and a **licensed clinical social worker**. Our teams work together to serve all areas of Los Angeles County.

---

### What We Do

Work with existing street medicine and field-based teams to:

- Support the expansion of field-based substance use and harm reduction services across Los Angeles County
  - Identify and fill gaps in field-based substance use services for PEH across the County
  - Address the need for stronger coordination between services and providers
- 

### How We Do This

- Provide technical assistance and training on addiction medicine and harm reduction practices
  - Support navigation and care coordination for treatment and recovery services
  - Provide direct clinical consultation
  - Engage in on-site partnership during field engagement
  - Assess and treat patients in the field in collaboration with the referring team
- 

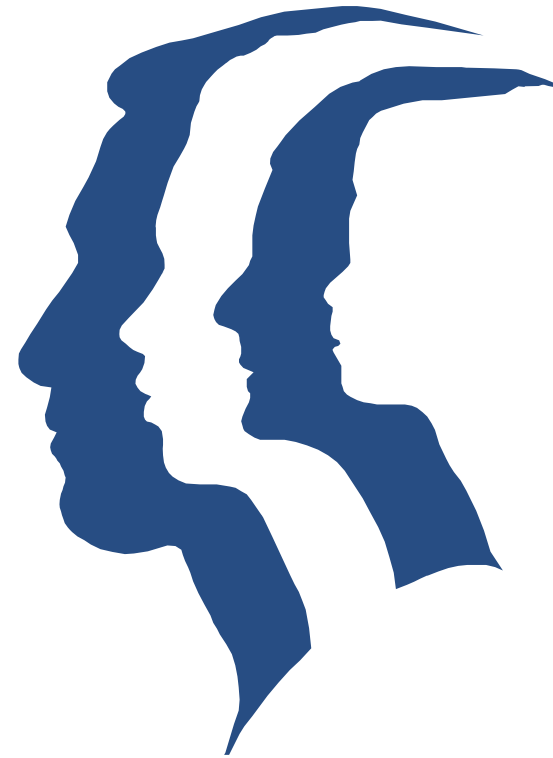
### How to Reach Us

Please contact us directly at:

**Email:** [sapc-sact@ph.lacounty.gov](mailto:sapc-sact@ph.lacounty.gov)

**Phone:** 213-210-3572

*\*\*\*For medical emergencies or suspected overdose, please call 911\*\*\**



**Thank You!**